

Crane

Warm & Cool Mist Humidifier

FOR MODEL: EE-6908



If you have any questions about the operation of your humidifier, please contact Crane Customer Care.



**PLEASE READ AND SAVE ALL INSTRUCTIONS TO ENSURE
THE SAFE AND EFFECTIVE USE OF THIS HUMIDIFIER.**

SAVE YOUR DATED PROOF OF PURCHASE!

[You will need this in case of warranty]

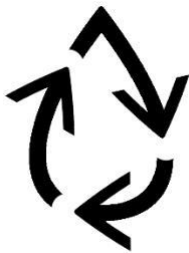


staple
tape
or paperclip
your
receipt
HERE

TABLE OF CONTENTS

Table of Contents & Sustainability	P. 1
Safety Instructions	P. 2-3
List of Main Parts	P. 4
Technical Specifications & Before Use	P. 5
Assembly & Operation	P. 6
HEPA Filter	P. 7
Maintenance & Storage	P. 8
Customer Care & Troubleshooting	P. 9
Warranty	P. 10

CRANE & SUSTAINABILITY



Crane USA is dedicated to your environment both inside and outside your home. We know if cleaned and maintained properly, our products last for years helping to reduce unnecessary use of resources and emissions making new products.

The Crane manual you are holding is from recycled materials with no added finishes or harmful dyes. If the humidifier should no longer operate, please be sure to dispose of the unit in an environmentally friendly way by taking it to a public collection point.

**PLEASE DO NOT PLACE BROKEN HUMIDIFIERS WITH YOUR
REGULAR HOUSEHOLD WASTE.**

IMPORTANT SAFETY INSTRUCTIONS



WARNING! READ AND SAVE THESE INSTRUCTIONS. Failure to follow all of the instructions listed below may result in electric shock, fire and/or serious personal injury.

1. **It is advisable to carry filled Water Tank with two hands.**
2. **DO NOT operate outdoors. This humidifier is intended for indoor use only.**
3. Always have water in the Water Tank when operating the unit.
4. Use only clean, cool tap water to fill the Water Tank (filtered or distilled water is recommended to avoid white dust if tap water is too hard). **DO NOT use hot water.**
5. Be sure that the Water Tank Cap is firmly tightened on Water Tank. Place the humidifier so the mist aims away from children, walls, furniture and electrical appliances.
6. Use only a 220-240VAC outlet. **ALWAYS plug and unplug unit with dry hands to avoid electric shock.**
7. Never operate the unit with a damaged cord or plug.
8. Always place the unit on a smooth, flat, lint-free, non-metallic, waterproof and level surface and position unit away from direct sunlight. Keep the cord away from heated surfaces and areas where it could be walked on or tripped over. Unplug the unit when not in use and whenever you clean or move the unit.
9. Do not add medication or essential oils into the Water Base or Water Tank. **Only add essential oils to aroma pad in the base.** Do not cover any openings on the unit or insert objects into any openings.
10. The unit should not be left unattended in a closed room as the air could become saturated and leave condensation on walls or furniture. Leave room door partly open when humidifier is being operated.
11. When cleaning the inside of the humidifier, keep water away from the Fan Vent. **Turn off and unplug the humidifier to wipe the exterior** (except the electrical controls) with a damp cloth. Humidifier requires regular cleaning. Please refer to the CLEANING INSTRUCTIONS in this manual.
12. Do not tilt or tip the humidifier or attempt to empty or fill it while it is in operation.
13. Do not use a detergent to clean any parts of the unit that contain water. Detergent film dissolved in the water supply can interfere with the output of the unit. Instead, always use white vinegar mixed with water to clean the humidifier.

SAVE THESE INSTRUCTIONS!

GENERAL SAFETY INSTRUCTIONS



WARNING! Read and understand all instructions. Failure to follow all instructions listed below may result in electric shock, fire or serious personal injury. The warnings, cautions, and instructions discussed in this instruction manual cannot cover all possible conditions and situations that may occur. It must be understood by the user that common sense and caution are a factor which cannot be built into this product, but must be supplied by the user.

THIS HUMIDIFIER IS NOT A TOY!

Do not let your child play with this humidifier. Serious injury and electrocution might be possible. This humidifier has to be operated by an adult only. Children should be supervised to ensure that they do not play with the humidifier.

SAVE ALL INSTRUCTIONS!

CAUTION: A short Power Supply Cord is provided to reduce the risk of personal injury resulting from becoming entangled in or tripping over a longer cord. Extension cords are available from local hardware stores and may be used if care is exercised in their use. If an extension cord is required, special care and caution is necessary. Also the extension cord must be (1) marked with an electrical rating of 220-240 V and at least 13 A., 1625 W., and (2) the cord must be arranged so that it will not drape over the countertop or tabletop where it can be pulled on by children or accidentally tripped over.

ELECTRIC POWER

If the electric circuit is overloaded by other appliances, your humidifier and/or appliances may not operate properly. The humidifier should be operated on a separate electrical circuit from other operating appliances.

POLARIZED PLUG

This humidifier has a polarized plug (one blade is wider than the other). As a safety feature to reduce the risk of electrical shock, this plug is intended to fit in a polarized outlet only one way. If the plug does not fit fully in the outlet, reverse the plug. If it still does not fit, contact a qualified electrician. Do not attempt to defeat this safety feature.



SAFETY WARNING

Although your humidifier is easy to operate, for your safety, the below warnings must be followed:

1. Do not place the humidifier near a heat source.
2. Never leave the humidifier unattended while connected to the electrical outlet.
3. To avoid any accidents, never cover the Mist Lid when the humidifier is in operation.
4. Use the humidifier on a smooth, flat, lint-free, non-metallic, waterproof, and level surface away from water.
5. Do not unplug from the wall socket by pulling on the supply cord.
6. The humidifier must be unplugged:
 - A. Before either filling or emptying the Water Basin and/or Water Tank.
 - B. Before any cleaning or maintenance is performed.
 - C. After each use.
 - D. If it appears to be faulty.

THIS PRODUCT IS INTENDED FOR HOUSEHOLD USE ONLY.

LIST OF MAIN PARTS

Fig. 1

1. Nebulizer
2. Aroma Pad
3. Fan Outlet
4. Dual Mist Outlet
5. Control Panel

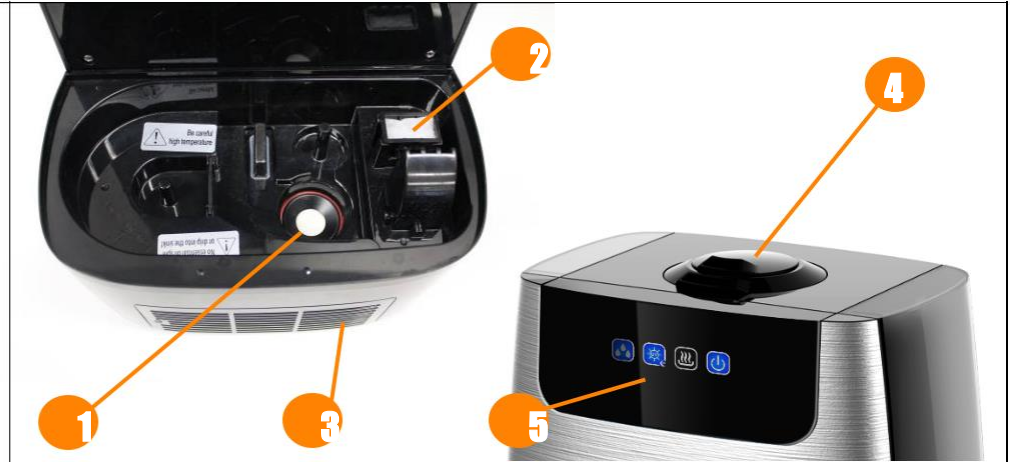
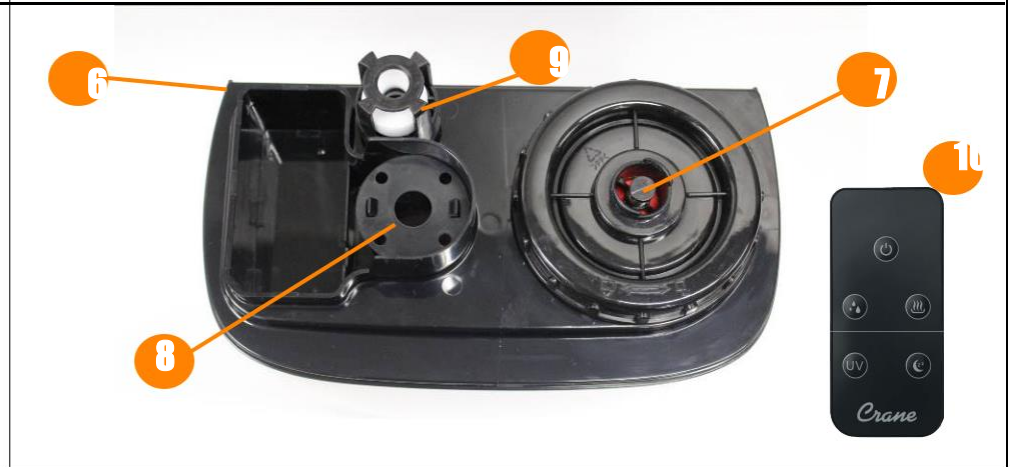


Fig. 2

6. Water Tank
7. Water Tank Cap & Filter
8. Mist Outlet Channel
9. Water Level Sensor Float
10. Remote



TECHNICAL SPECIFICATIONS

Rating Voltage	220-240 V
Frequency	50-60Hz
Noise	<37 decibels from 3 ft away
Power	105W
Water Tank Capacity	5 Liter/ Approx. 1.3 gallons
Run Time Per Tank	Up to 24 Hours
Humidifying Capacity	Warm Mist humidity capacity >400ML/H Cool Mist humidity capacity >300ML/H

BEFORE EACH USE:

CHECK HUMIDIFIER PLACEMENT:

Place the Humidifier on an elevated, non-metallic, lint-free, waterproof, level surface at least 2 feet above the floor.

- **DO NOT PLACE ON CARPET OR TOWEL.** The fan vent is located on the bottom of the humidifier base. The fan vent **MUST NOT** be obstructed.
- **DO NOT PLACE ON WOOD SURFACE** or near furniture that can be damaged by too much moisture.



CAUTION

- **DO NOT attempt to operate the humidifier without water in the Water Tank.**
- **DO NOT plug or unplug the Power Cord with wet hands as electric shock could occur.**
- **DO NOT use any additives (such as oils, fragrances or vapor/steam medications) in the water tank, only in the aroma pad.**

ASSEMBLY & USE

ALWAYS use fresh cool water when operating the humidifier.

1. Turn Water Tank upside down, unscrew Water Tank Cap and fill with cool water only.

ALWAYS HOLD WATER TANK WITH TWO HANDS WHEN FULL.

DO NOT fill water all the way to the rim.

DO NOT use hot water.

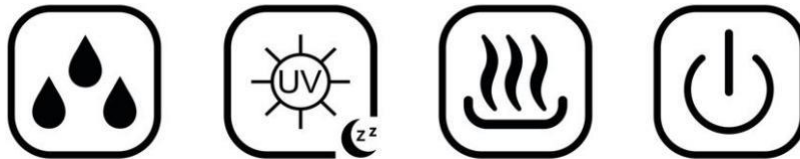
DO NOT add any medication, essential oils, or salt to the water tank. (Essential oils should only be used in the aroma pad.)

DO NOT pour water into Mist Outlet Channel.

2. Screw Water Tank Cap back onto Water Tank and turn the tank over to place on Humidifier Base, making sure it fits together securely. Please note if the water tank is not properly placed on the humidifier base it will not turn on.



Note: Do not attempt to move the humidifier while Water Tank is placed on the Humidifier Base. Doing so may cause leakage of water and/or Humidifier Base to overflow.



3. **Power:** Plug the power cord in and press this icon to turn power on and off. When power is on, cool mist will begin to rise from the mist lid at the highest mist level setting.

Note: When the power is on the icon will be blue

4. **Warm Mist Option:** Press this icon to select the warm mist function. *(It may take 5-10 minutes for the water to warm up)*

Note: A blue light will be on when the Warm Mist is on

5. **UV Mode:** Press this icon to turn on UV, then press again to turn off UV.

Note: A blue light will be on when UV light is on.

6. **Sleep Mode:** Press the UV icon for 3 seconds to turn the display icons off. Press any button to de-activate the Sleep Mode setting.

7. **Mist Setting:** Press this icon to change the mist output from low or high. The humidifier always starts at high when powering on, to change to low press once.

Note: The high setting will light up blue and the low setting will light up purple.

SET THE CORRECT HUMIDITY OUTPUT: To reduce excessive humidity or condensation especially in small rooms, leave the room door open and adjust mist intensity to low with the Mist Setting Icon.

NOTE: As a safety feature, when the humidifier runs out of water it will beep three times and power off. Unplug the unit before removing and refilling the water tank.

AROMA TRAY

To use the Aroma function, add essential oils to the included pad (or with any compatible scent pad) as desired. Replace pad before running humidifier. Remove scent pad and clean out tray when not using the aroma tray.

HEPA FILTER

To open the filter compartment door, press the “”



Level 1: Washable Particle Filter

The purpose of this filter is to capture initial dust and allergen particles. It helps extend the life of the HEPA filter by removing large particles before they can get to the HEPA filter. You will find visible dust, hair, and lint in the particle filter. By keeping the particle filter clean, you can dramatically extend the life of your HEPA filter and improve the overall efficiency of your air purifier.

NOTE: See Maintenance instruction below.

Level 2: HEPA Filter

HEPA stands for High Efficiency Particulate Air. The inlet grill of your air purifier draws in dirty air. Crane's air purifier HEPA filter removes at least 99.97% of all particles as small as 0.3 microns. Microns are used to measure the size of these microscopic airborne particles.

Allergens such as pollen, smoke, animal dander, mold spores, and dust get trapped in the HEPA filter.

Level 3: Active Carbon Filter

The Active Carbon Filter (behind the HEPA filter) captures particles as well as absorbs common household odors caused from tobacco, pets, garbage and cooking.



CLEANING THE WASHABLE PARTICLE FILTER

1. Gently remove the particle filter.
2. Rinse the particle filter by hand using only warm water.
DO NOT place in dishwasher.
DO NOT use hard solvents or detergents.
3. Particle filter *MUST* be thoroughly dry before placing it back in the unit.

Note: HEPA Filter should be cleaned once a month by a vacuum cleaner

MAINTENANCE

Cleaning and disinfecting on a regular basis is important for maintaining the performance of your humidifier.

IMPORTANT: Water left in the tank or base when not in use may result in buildup of mineral deposits and bacteria which may inhibit the output efficiency as well as void the warranty. If water remains in the Water Tank for more than a day or two, bacterial growth is possible.

DAILY MAINTENANCE

1. Always turn off and unplug from outlet before cleaning.
2. Empty water from the water tank and humidifier base daily. Leave the water tank cap off to allow air to circulate when not in use.
3. Wipe and dry humidifier base with a clean, dry cloth or paper towel.

WEEKLY MAINTENANCE

1. Always turn off and unplug from outlet before cleaning.
2. Empty water from the water tank and humidifier base.
3. Fill the water tank with about a half-gallon of warm water. Add 2 Tablespoons of white vinegar. Shake vigorously and let sit for 20-30 minutes. Shake vigorously again and empty the water. Rinse water tank with plain water.
4. Rinse water and vinegar through the mist chamber. Use brush to clean any build up
5. Make similar white vinegar/water solution. Pour into humidifier base. Let sit for 20-30 minutes, then, clean all interior surfaces with a soft cloth or brush provided to help remove scale. Rinse humidifier base with plain water. Wipe dry with a clean, soft cloth. Wipe the exterior surface water tank and humidifier base with a soft, dry cloth. NEVER IMMERSER HUMIDIFIER BASE IN WATER.
6. The filter does not need to be replaced if it is soaked in salt water for 24 hours on a weekly basis. Doing so will extend the life of the filter.

END-OF-SEASON MAINTENANCE & STORING YOUR HUMIDIFIER

1. Always turn off and unplug from outlet before cleaning.
2. Empty water from the water tank and humidifier base.
3. Disinfect water tank and humidifier base with the white vinegar and water solution as described in weekly maintenance.
4. Make sure that water tank has air dried without the water cap secured.
5. Make sure the humidifier base and water tank are completely dry before end of season storage. Store the humidifier in a cool dry place.
6. **DO NOT** place any heavy items on top of humidifier during storage as this may result in possible damage of the humidifier.
7. Store the cord in a clean, dry location away from metal objects. Always check the plug before use to ensure metal items have not become attached.

CRANE CUSTOMER CARE

If you have any questions with regards to the operation of this humidifier or need a spare part, please contact Crane Customer Care

TROUBLESHOOTING

DO NOT attempt to repair the motor yourself.

If the humidifier continues to not operate, please contact Crane Customer Care.

Problem	Solution
Humidifier does not operate	<ul style="list-style-type: none">▪ Make sure the power cord is plugged into the outlet correctly and the power indicator icon is pressed.▪ Make sure tank is securely placed on the base.
Air blows but water vapor is not produced.	<ul style="list-style-type: none">• Remove excess water from the base and allow the tank to fill base.• The surface of the nebulizer may be dirty. Gently clean nebulizer with a cotton swab.• If you use hard water, purchase distilled or filtered water or clean the filter.
There is a strange odor	<ul style="list-style-type: none">▪ Clean the Water Tank with water and white vinegar solution and rinse with clean water.▪ Leave the empty Water Tank open for 12 hours (without the Water Tank Cap attached) in a cool place.
Water is accumulating outside of unit or area surrounding unit.	<ul style="list-style-type: none">• Too much humidity, lower mist setting.• Unit not level and water is accumulating. Unplug and place on level surface.• Point mist away from objects.• Raise humidifier on water-resistant level surface 2 feet off floor.
White dust appears	<ul style="list-style-type: none">▪ Area tap water may have too many minerals. Change to filtered or distilled water or clean filter.
Loud noise	<ul style="list-style-type: none">• Make sure unit is on a hard flat, level surface.• Ensure tank is properly placed on base.

CRANE WARRANTY

For more information regarding the warranty policy,
please contact us.

LIMITED WARRANTY

Thank you for purchasing a Crane product which has been tested to meet our stringent quality standards. This product is warranted to be free from manufacturing defects under normal use and conditions for 6 months.

**PLEASE CONTACT US BEFORE RETURNING THIS PRODUCT TO THE STORE.
CALL CRANE CUSTOMER CARE FOR PROBLEMS AND QUESTIONS. WE CAN HELP.**

WARRANTY REQUIRES A DATED PROOF OF PURCHASE.

This warranty is void if the defect is due to accidental damage, misuse, abuse, neglect, improper repair or alteration by unauthorized persons, or a failure to follow operating instructions provided with the product **including the use of essential oils directly into the tank and base**. This warranty does not apply to normal wear and tear or commercial use.

In no event shall liability exceed the purchase price paid by the purchaser of the product. Under no circumstances shall there be liability for any loss – direct, indirect or incidental – or consequential damage arising out of, or in connection with the use of this product.

This warranty is valid all over Philippines. This warranty is effective only if the product is purchased and operated in Philippines.

Any instructions or warranty included in this manual may be subject to change without notice. For the most up-to-date instructions and warranty information, please contact us or visit our website.

**TO RECEIVE WARRANTY INSTRUCTIONS AND RETURN AUTHORIZATION, PLEASE CALL
OR EMAIL CRANE CUSTOMER CARE.**

CRANE PHILIPPINES
37-E1 Baler Street S.F.D.M. Quezon City
Telephone no: 8376-6466
Email: sales@crane-philippines.com
Website: crane-philippines.com

Crane

DESIGN FOR BETTER LIVING